

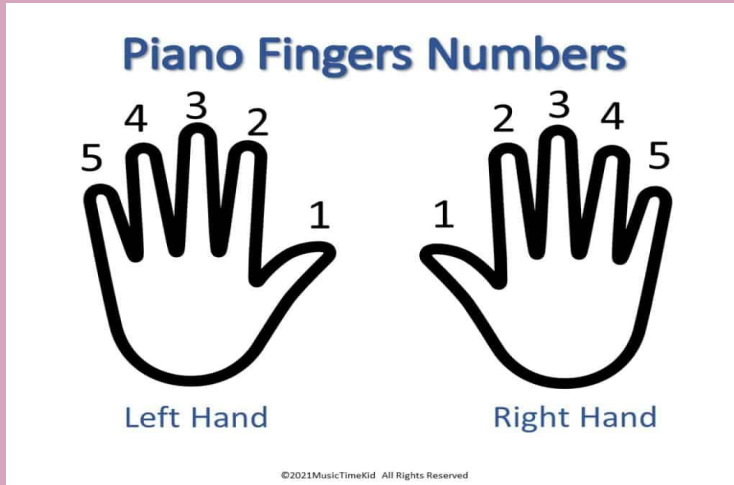
What we learned in



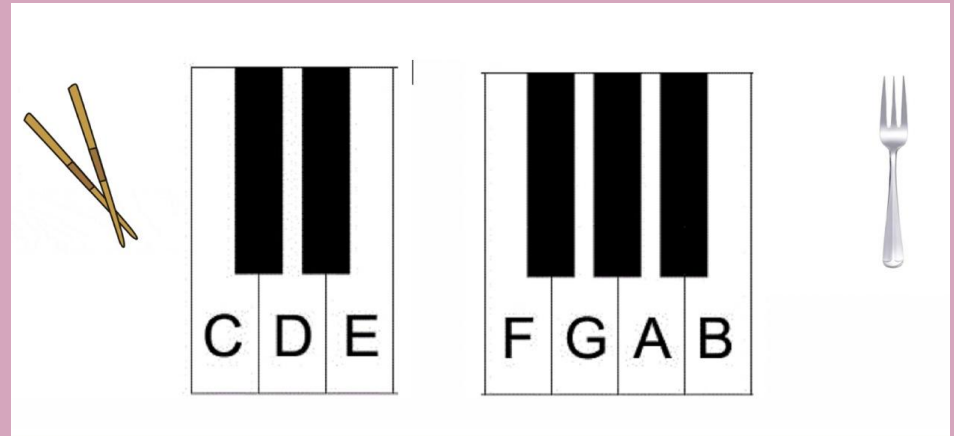
Ms.DeWitt's class

# *First, this is how we learned to play the notes on a piano:*

These are the finger numbers



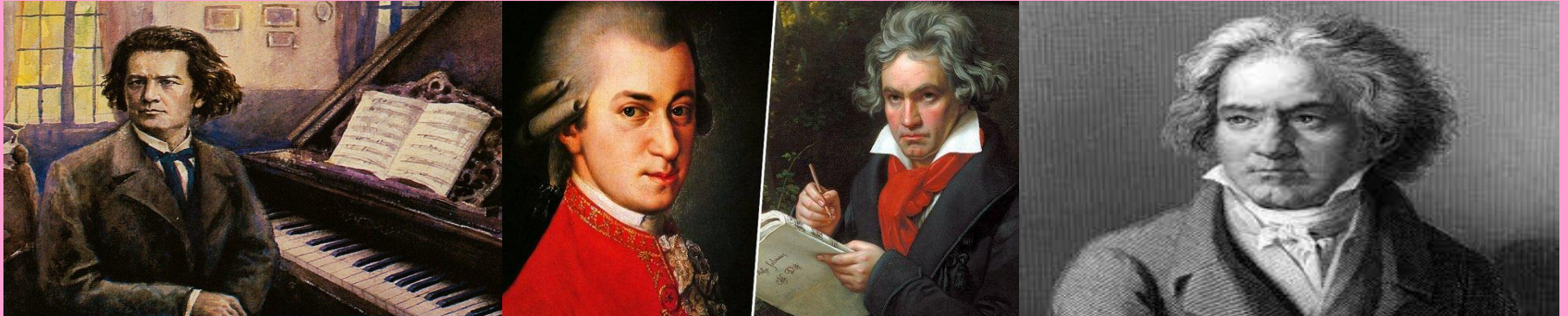
These are the “chopsticks” and “forks,” which help us remember the letters on the piano,





## *Then, we learned about Beethoven.*

This is Beethoven. Beethoven was born on December 1770 in Bonn, Germany. He passed away on March 26, 1827 at age 56 in Vienna, Austria. His longest symphony was 70 minutes long! Fun fact is that the song Ode To Joy was actually from a poem written by a guy named Friedrich Schiller. Beethoven took the poem and turned it into a symphony. Another fun fact, is that Mozart was Beethoven's piano teacher for a bit.



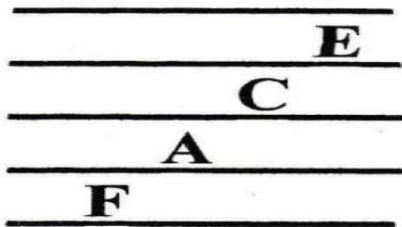
# *Also, we have learned the spaces and lines on the Treble Clef.*

How we remember the **spaces** is that it rhymes with **FACE**.

How we remember the **lines** is to remember the saying **Every, Good, Boy, Does, Fine**.

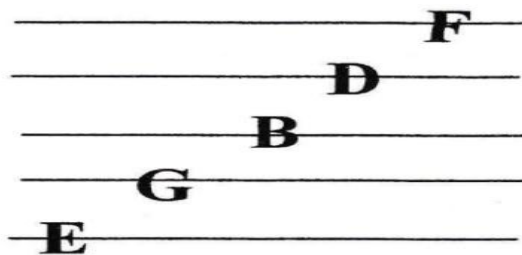
## Letter Names of the SPACES

(The SPACES spell "F A C E")

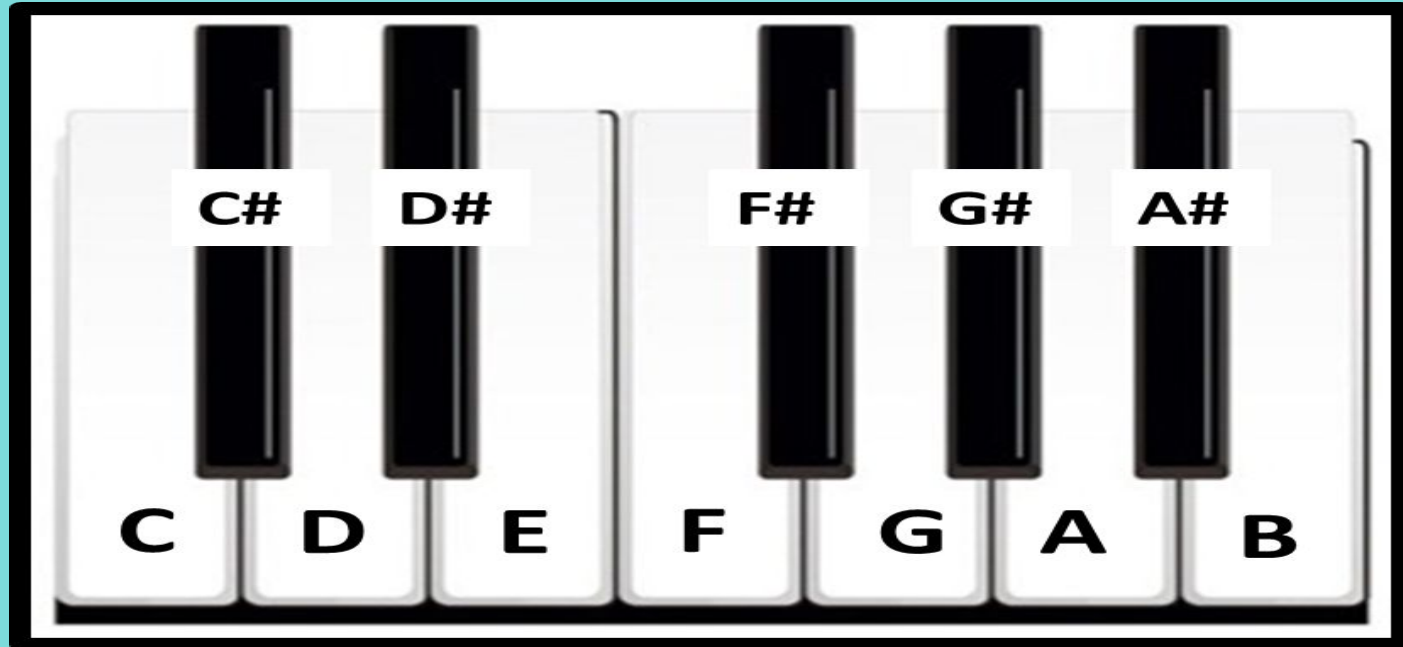


## Letter Names of the LINES

(Remember a SAYING\* for the LINES)



*Next, we learned about the piano letters:*





*This are some of the things that we have learned in these past few weeks with Ms. DeWitt.*



Ode to Joy  
Ludwig van Beethoven

Copyright 2009 Music-For-Music-Teachers.com  
All Rights Reserved

A musical score for 'Ode to Joy' with large red letters A, B, and A indicating fingerings for the notes. The notes are C, D, E, F, G, A, B. The score includes lyrics: 'Old Man - Thin old hat all a sing. long. e . i . e . i . O G . 3 . 4 . 7'. It also includes a 'Repeat sign' box with the text 'These dots mean to go back to the beginning!'.

Two diagrams of piano keys. The first diagram shows keys C, D, E with a pair of scissors icon above it. The second diagram shows keys F, G, A, B with a fork icon to its right.

Piano Fingers Numbers

Diagram showing the left hand and right hand with fingers numbered 1 to 5. The left hand is labeled 'Left Hand' and the right hand is labeled 'Right Hand'. A small copyright notice is at the bottom: '©2013 MusicTeacher All Rights Reserved'.

Letter Names of the SPACES  
(The SPACES spell "F A C E")

A musical staff with five lines. The spaces between the lines are labeled with the letters F, A, C, and E from bottom to top.

Letter Names of the LINES  
(Remember a SAYING\* for the LINES)

A musical staff with five lines. The lines are labeled with the letters E, G, B, D, and F from bottom to top.

Diagram of piano keys with sharp signs. The keys are labeled C, D, E, F, G, A, B. The keys C, D, F, G, and A have sharp signs (#) above them, indicating C#, D#, F#, G#, and A#.